



Medium Fit

240 GSM

- Flat rib-knit collar and sleeve cuffs
- Heavy single-jersey back neck tape
- Two-button front placket with buttons in matching colour
- Set-in sleeves
- Single-needle topstitching at shoulder seams
- Side slits with heavy single-jersey facing
- Narrow twin-needle topstitching at hem

Shell - Piqué
100% Cotton - Organic Ring Spun Combed - 240.0 GSM
Panel washed

Wash similar colours together, no ironing on print, wash and iron inside out.

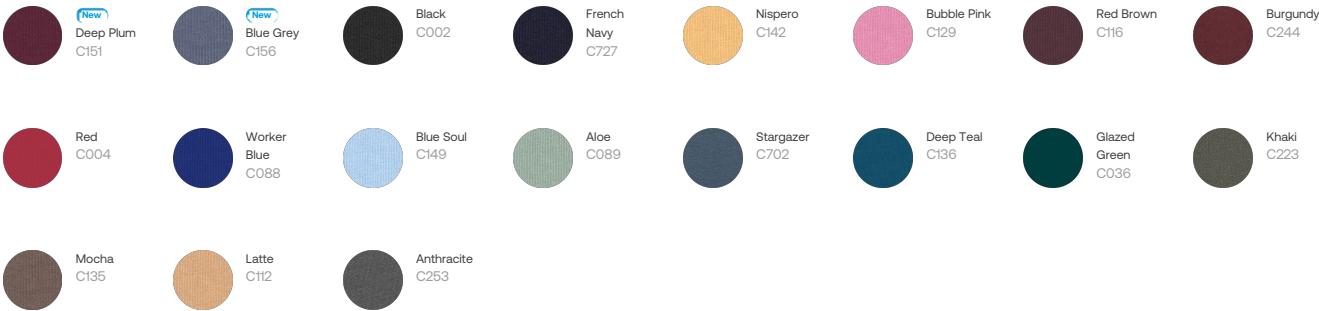


Weaving : Bangladesh
Dyeing : Bangladesh
Assembly : Bangladesh

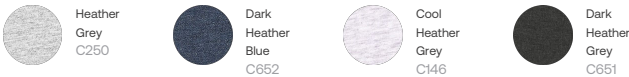
Whites



Colors



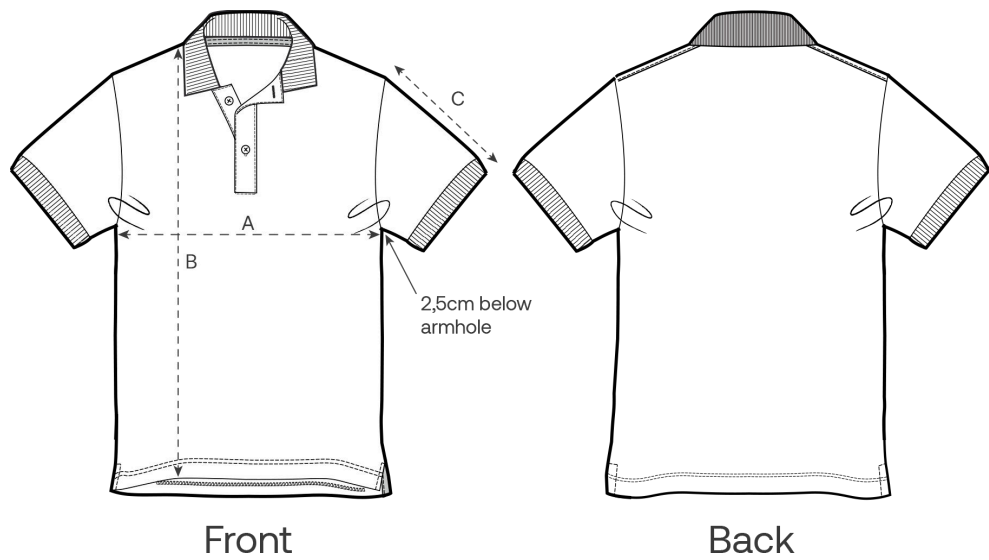
Essential Heathers



Special Heathers



Size Guide



Measurement in cm	XXS	XS	S	M	L	XL	XXL	3XL	4XL	5XL
A - Half Chest	45.5	47.5	50.5	53.5	56.5	59.5	63.5	67.5	72.5	77.5
B - Body Length	61	64	68	72	74	76	78	80	82	83
C - Sleeve Length	22	22.5	23	23.5	24	24.5	25	25.5	25.5	25.5

Packing

Sizes	XXS	XS	S	M	L	XL	XXL	3XL	4XL	5XL
Pieces / bag	5	5	5	5	5	5	5	5	5	5
Pieces / box	25	50	50	50	50	50	50	25	25	25

Environmental impact

Please note that the table below shows data for an adult in size M.

Carbon emission in Kg CO2eq	Natural Raw	Eco-heather	Whites & Colours	Heathers*
From cradle to gate ¹	2.91	3.02	3.6	3.65
From cradle to grave ²	5.65	5.76	6.34	6.39

Water usage in m³	Natural Raw	Eco-heather	Whites & Colours	Heathers*
From cradle to gate ¹	1.19	1.42	1.84	1.98
From cradle to grave ²	2.9	3.13	3.56	3.7

1 - From the extraction of raw materials to the point it leaves the manufacturer. 2 - From the extraction of raw materials to the product end-of-life. * Except Heather Haze