



The Unisex Vintage Mid-light Polo

Fitted

XXS → 3XL

185 GSM

Description

- Set-in sleeve
- Flat knit rib on collar and sleeve hem
- Inside heavy single jersey back neck tape
- Front inserted placket with 2 buttons in matching body colour
- Slit and bartack finish at side seam hem
- Double needle topstitch at shoulder seams
- Bottom hem with narrow double needle topstitch

Composition

- Shell - Piqué
- 100% Cotton - Organic Ring Spun Combed - 185.0 GSM
- Garment washed, Garment dyed

Care instruction

Wash similar colours together, no ironing on print, wash and iron inside out.



Country of origin

- Weaving : Bangladesh
- Dyeing : Bangladesh
- Assembly : Bangladesh

Colors



New
G. Dyed
Blue Stone
C732

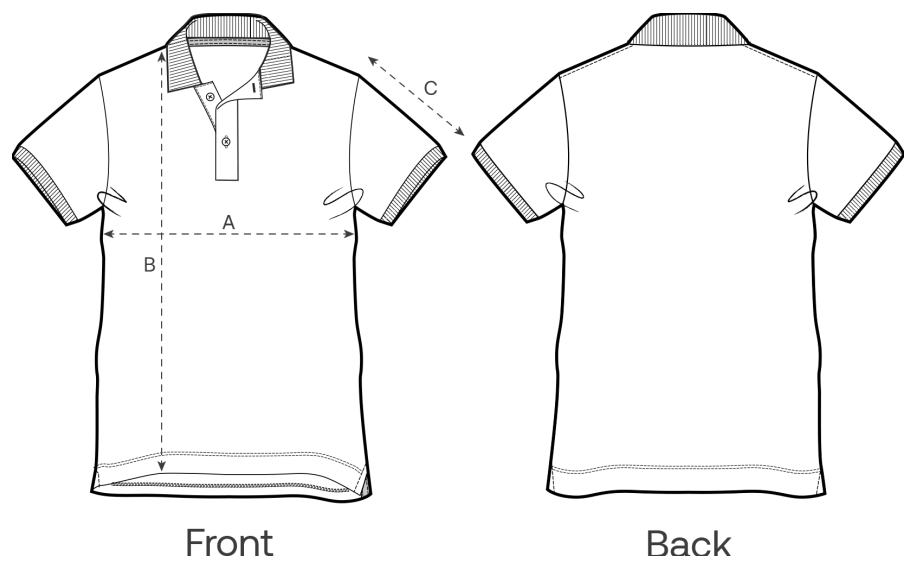


G. Dyed
Hydro
C102



G. Dyed
Black Rock
C140

Size Guide



Measurement in cm	XXS	XS	S	M	L	XL	XXL	3XL
A - Half Chest	43	45	48	51	54	57	61	65
B - Body Length	61	64	68	72	74	76	78	80
C - Sleeve Length	17.5	18.5	20	21.5	22	22.5	23	23.5

Packing

Sizes	XXS	XS	S	M	L	XL	XXL	3XL
Pieces / bag	5	5	5	5	5	5	5	5
Pieces / box	25	50	50	50	50	50	50	25

Environmental impact

Please note that the table below shows data for an adult in size M.

Carbon emission in Kg CO2eq	Natural Raw	Eco-heather	Whites & Colours	Heathers*
From cradle to gate ¹	-	-	3.22	-
From cradle to grave ²	-	-	5.59	-

Water usage in m³	Natural Raw	Eco-heather	Whites & Colours	Heathers*
From cradle to gate ¹	-	-	2.43	-
From cradle to grave ²	-	-	3.89	-

1 - From the extraction of raw materials to the point it leaves the manufacturer. 2 - From the extraction of raw materials to the product end-of-life. * Except Heather Haze