



The Women's Mid-light Polo

Fitted

XS → 3XL*

185 GSM

Description

- Set-in sleeve
- Flat knit rib on collar and sleeve hem
- Inside heavy single jersey back neck tape
- Front inserted placket with 2 buttons in matching body colour
- Slit and bartack finish at side seam hem
- Double needle topstitch at shoulder seams
- Bottom hem with narrow double needle topstitch

Composition

Shell - Piqué
100% Cotton - Organic Ring Spun Combed - 185.0 GSM
Panel washed

Care instruction

Wash similar colours together, no ironing on print, wash and iron inside out.



Country of origin

Weaving : Bangladesh
Dyeing : Bangladesh
Assembly : Bangladesh

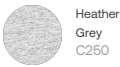
Whites



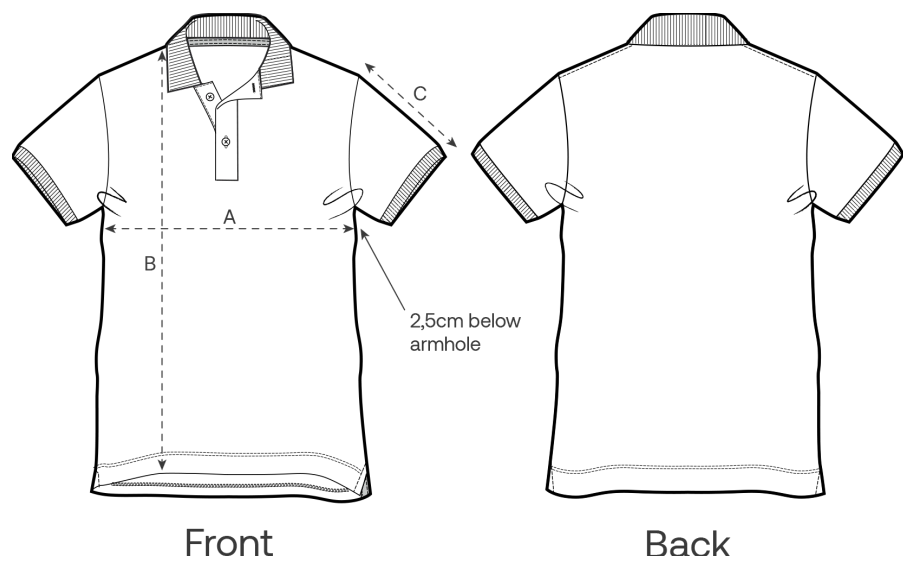
Colors



Essential Heathers



Size Guide



Measurement in cm	XS	S	M	L	XL	XXL	3XL
A - Half Chest	42	45	48	51	55	59	63
B - Body Length	60	62	64	66	68	70	72
C - Sleeve Length	18.5	19	19.5	20	20.5	21	21.5

Packing

Sizes	XS	S	M	L	XL	XXL	3XL
Pieces / bag	5	5	5	5	5	5	5
Pieces / box	50	50	50	50	50	50	25

Environmental impact

Please note that the table below shows data for an adult in size M.

Carbon emission in Kg CO2eq	Natural Raw	Eco-heather	Whites & Colours	Heathers*
From cradle to gate ¹	1.86	-	2.33	2.34
From cradle to grave ²	4.08	-	4.55	4.56

Water usage in m³	Natural Raw	Eco-heather	Whites & Colours	Heathers*
From cradle to gate ¹	0.77	-	1.18	1.3
From cradle to grave ²	2.1	-	2.51	2.62

1 - From the extraction of raw materials to the point it leaves the manufacturer. 2 - From the extraction of raw materials to the product end-of-life. * Except Heather Haze