



### Relaxed Fit

**XXS → 3XL**

215 GSM

### Description

1x1 rib at neckline

Self-fabric back neck tape

### Set-in sleeves

Twin-needle topstitching at sleeve cuffs and hem

## Composition

Shell - Loose Knit Single Jersey

100% Cotton - Organic Ring Spun Carded - 215.0 GSM

Panel washed

### Care instruction

Wash similar colours together, no ironing on print, wash and iron inside out.



## Country of origin

## Weaving : Bangladesh

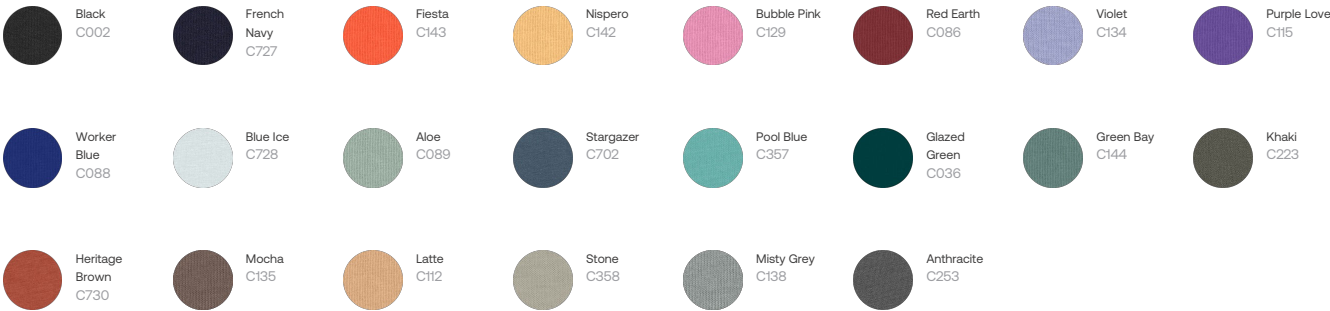
## Dyeing : Bangladesh

Assembly : Bangladesh

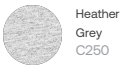
Whites



Colors



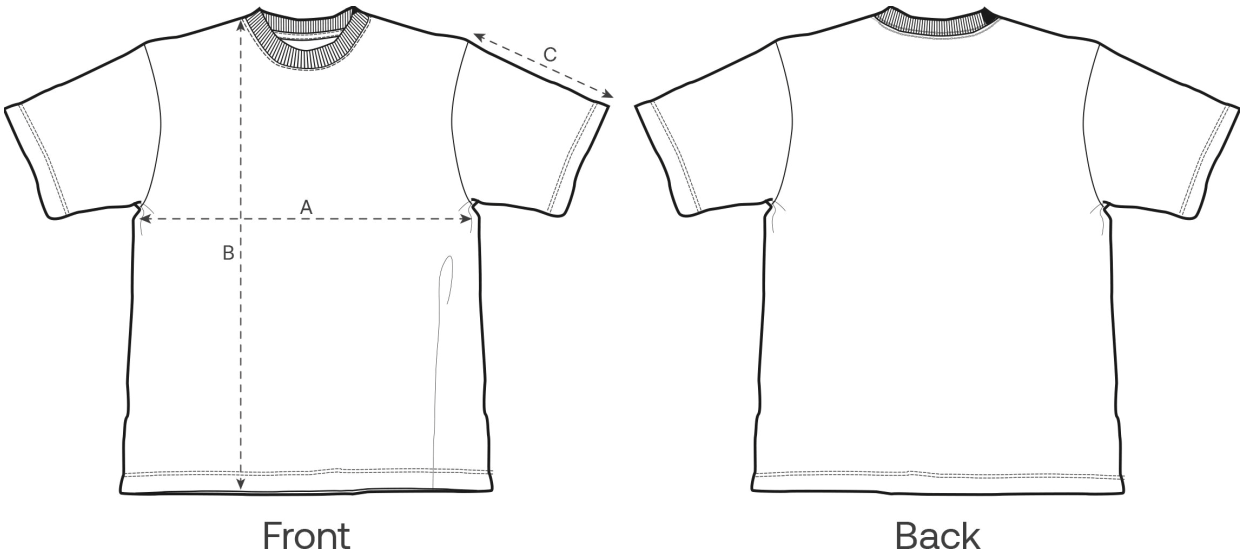
Essential Heathers



Special Heathers



Size Guide



Measurement in cm	XXS	XS	S	M	L	XL	XXL	3XL
A - Half Chest	47.5	49.5	51.5	55.5	58.5	61.5	65.5	69.5
B - Body Length	64	67	71	75	77	79	81	83
C - Sleeve Length	20	21	22.5	24	24.5	25	25.5	26

Packing

Sizes	XXS	XS	S	M	L	XL	XXL	3XL
Pieces / bag	5	5	5	5	5	5	5	5
Pieces / box	25	50	50	50	50	50	50	25

Environmental impact

Please note that the table below shows data for an adult in size M.

Carbon emission in Kg CO2eq	Natural Raw	Eco-heather	Whites & Colours	Heathers*
From cradle to gate <sup>1</sup>	2.5	2.59	3.1	3.11
From cradle to grave <sup>2</sup>	5.04	5.13	5.64	5.65

Water usage in m³	Natural Raw	Eco-heather	Whites & Colours	Heathers*
From cradle to gate <sup>1</sup>	0.98	1.17	1.5	1.64
From cradle to grave <sup>2</sup>	2.54	2.73	3.06	3.2

1 - From the extraction of raw materials to the point it leaves the manufacturer. 2 - From the extraction of raw materials to the product end-of-life. \* Except Heather Haze