



The iconic mid-light women’s fitted t-shirt

Fitted XS → 3XL* 155 GSM

Description

- 1x1 rib at neckline
- Self-fabric back neck tape
- Set-in sleeves
- Narrow twin-needle topstitching at sleeve cuffs and hem

Composition

- Shell - Single Jersey
- 100% Cotton - Organic Ring Spun Combed - 155.0 GSM
- Fabric washed

Care instruction

Wash similar colours together, no ironing on print, wash and iron inside out.



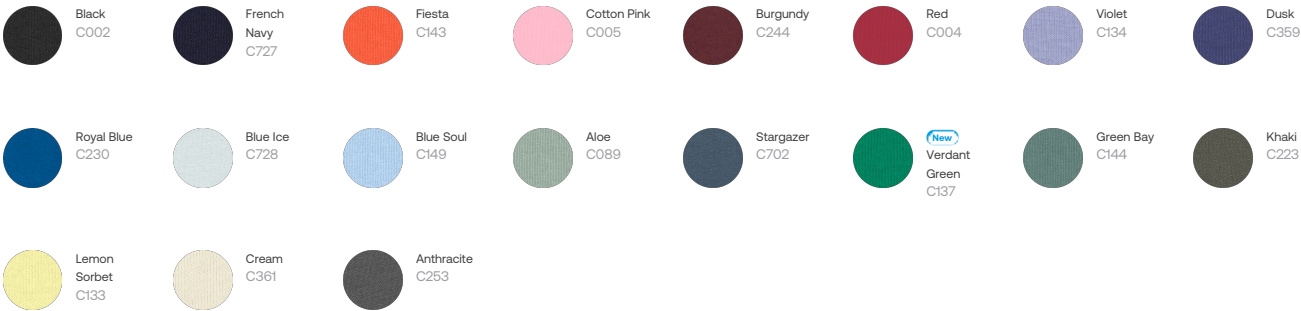
Country of origin

- Weaving : Bangladesh
- Dyeing : Bangladesh
- Assembly : Bangladesh

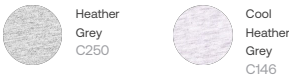
Whites



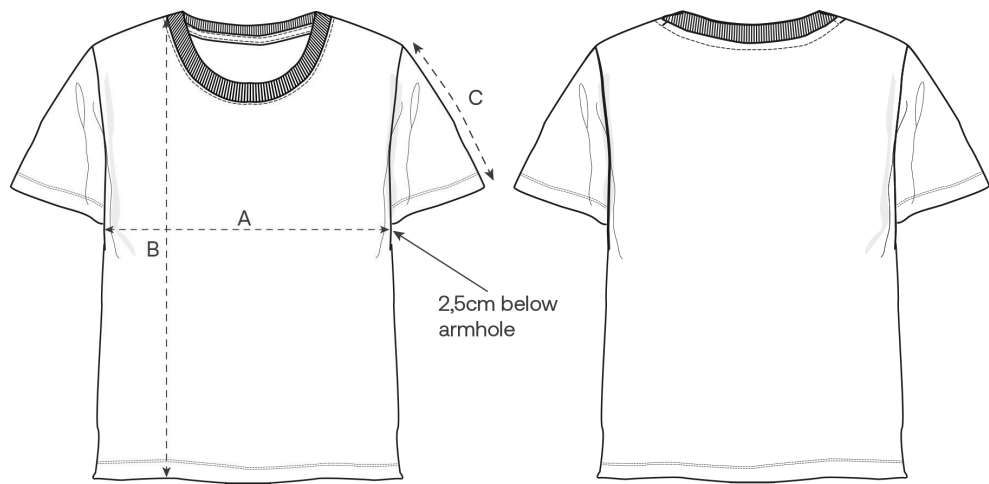
Colors



Essential Heathers



Size Guide



Front

Back

Measurement in cm	XS	S	M	L	XL	XXL	3XL
A - Half Chest	41.5	44.5	47.5	50.5	53.5	57.5	61.5
B - Body Length	59	62	64	66	68	70	72
C - Sleeve Length	17	17.5	18	18.5	19	20	20.5

Packing

Sizes	XS	S	M	L	XL	XXL	3XL
Pieces / bag	5	5	5	5	5	5	5
Pieces / box	100	100	100	100	100	100	50

Environmental impact

Please note that the table below shows data for an adult in size M.

Carbon emission in Kg CO2eq	Natural Raw	Eco-heather	Whites & Colours	Heathers*
From cradle to gate ¹	1.29	-	1.58	1.56
From cradle to grave ²	3.21	-	3.49	3.48

Water usage in m³	Natural Raw	Eco-heather	Whites & Colours	Heathers*
From cradle to gate ¹	0.49	-	0.76	0.79
From cradle to grave ²	1.54	-	1.82	1.85

1 - From the extraction of raw materials to the point it leaves the manufacturer. 2 - From the extraction of raw materials to the product end-of-life. * Except Heather Haze