



The Women's Tank Top

Medium Fit XS → XXL 155 GSM

Description

Sleeveless
1X1 Ribs at collar and armhole
Back neck tape in self fabric
Twin needles topstitches at hem

Composition

Shell - Single Jersey
100% Cotton - Organic Ring Spun Combed - 155.0 GSM
Fabric washed

Care instruction

Wash similar colours together, no ironing on print, wash and iron inside out.



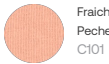
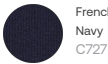
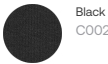
Country of origin

Weaving : Bangladesh
Dyeing : Bangladesh
Assembly : Bangladesh

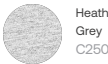
Whites



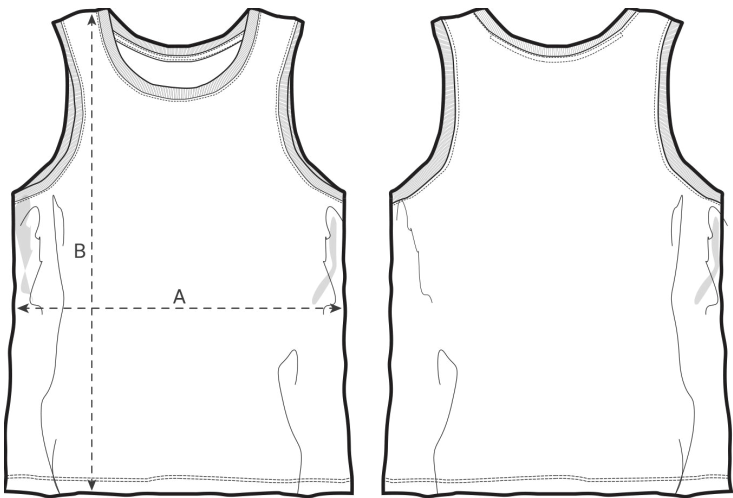
Colors



Essential Heathers



Size Guide



Front

Back

| Measurement in cm | XS | S | M | L | XL | XXL |
|-------------------|----|----|----|----|----|-----|
| A - Half Chest | 42 | 45 | 48 | 51 | 54 | 58 |
| B - Body Length | 53 | 56 | 58 | 60 | 62 | 64 |

Packing

| Sizes | XS | S | M | L | XL | XXL |
|--------------|-----|-----|-----|-----|-----|-----|
| Pieces / bag | 5 | 5 | 5 | 5 | 5 | 5 |
| Pieces / box | 100 | 100 | 100 | 100 | 100 | 100 |

Environmental impact

Please note that the table below shows data for an adult in size M.

| Carbon emission in Kg CO2eq | Natural Raw | Eco-heather | Whites & Colours | Heathers* |
|-----------------------------------|-------------|-------------|------------------|-----------|
| From cradle to gate ¹ | - | - | 1.4 | 1.42 |
| From cradle to grave ² | - | - | 3.26 | 3.28 |

| Water usage in m³ | Natural Raw | Eco-heather | Whites & Colours | Heathers* |
|-----------------------------------|-------------|-------------|------------------|-----------|
| From cradle to gate ¹ | - | - | 0.64 | 0.68 |
| From cradle to grave ² | - | - | 1.64 | 1.68 |

1 - From the extraction of raw materials to the point it leaves the manufacturer. 2 - From the extraction of raw materials to the product end-of-life. * Except Heather Haze