



Want the same style for everyone?  
**Try the B&C ID.332 Crew /kids**

WG004

## B&C ID.332 Crew

B&C  
COLLECTION

### Composition

80% pre-shrunk ring-spuncotton, (investing in Better Cotton\*) / 20% recycled polyester - RCS certified

\* By choosing our cotton products, you're supporting our investment in Better Cotton's mission

### Size

XS, S, M, L, XL, 2XL, 3XL, 4XL\*, 5XL\*

### Packing

10 pcs/pack & 40 pcs/carton

### Weight

280 g/m<sup>2</sup>

### Color Note

\*Colours available in 4XL & 5XL : Black - Navy - Sport Grey

### Details

The B&C ID.332 Crew is a sustainable, modern classic. Its gender-neutral style, extensive size range (XS-5XL) and 18 vibrant colours are perfect for everyone, every day. Its soft, durable fabric and contemporary dropped shoulder design offer both comfort and style. With its label-free neck and perfectly printable 100% cotton-face, it's easy to customise. Combine it with the B&C ID.000 Sweatpant for a complete look. For coordinated looks for everyone, pair it with B&C ID.332 Crew /kids.

### Features

True gender-neutral style with side seams

Classic modern relaxed fit for all occasions

100% cotton face with excellent printability and soft handfeel

Set-in sleeves with a slight dropped shoulder enhance mobility

Classic cuffs and bottom hem in 1×1 rib with elastane

9 sizes: XS-5XL

18 classic and contemporary colours to cover any need: from promotional and workwear, to academic, activewear and fashion.

"B&C No Label" solution for easy rebranding

Optimal combination of quality and affordability, ideal for high volumes

### Sustainability

B&C, now sourcing 100% more sustainable fibres

Supporting responsible cotton production through Better Cotton\*

Contains recycled materials

Each B&C ID.332 Crew contains on average 11 post-consumer recycled PET bottles (550ml)

\* This product is sourced via a system of mass balance and therefore may not contain Better Cotton.

### Mix&Match

Pair it with the B&C ID.000 Sweatpant for a full look

Matching kids' style: B&C ID.332 Crew /kids

### Sustainability



### Care instructions



All our products are tested and approved using all main print techniques.

View on the website



Colors

003

NAVY

020

BLACK\*

6200

SPORT GREY\*

001

WHITE

670

DARK GREY

004

RED

450

ROYAL BLUE

101

OFF WHITE

235

ORANGE

370

BURGUNDY

552

URBAN KHAKI

540

BOTTLE GREEN

240

POP YELLOW

461

NORDIC BLUE

121

MASTIC

565

LOTUS BLUE

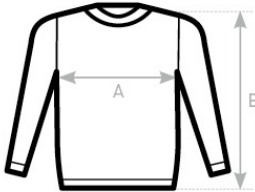
351

RADIANT PURPLE

504

BLUSH MINT

Size Guide



B&C ID.332 CREW WG004	XS	S	M	L	XL	2XL	3XL	4XL	5XL
A HALF CHEST	51	54	57,5	61	64,5	68	72	76	80
B BODY LENGTH FROM NECK POINT	67	69	71	73	75	77	78	79	80

View on the website

