



WG008

B&C ID.223 Hoodie

B&C
COLLECTION

Composition

50% pre-shrunk ring spun cotton (investing in Better Cotton*) / 50% recycled polyester - RCS certified

* By choosing our cotton products, you're supporting our investment in Better Cotton's mission

Size

XS, S, M, L, XL, 2XL, 3XL, 4XL*, 5XL*

Packing

10 pcs/pack & 30 pcs/carton

Weight

280 g/m²

Color Note

*Colours available in 4XL & 5XL : Navy - Black - Sport Grey

Details

With its modern relaxed fit, the sustainable gender-neutral B&C ID.223 Hoodie is the essential, multifunctional choice for any business. Its fabric ensures excellent printability, and with its label-free neck it's easy to customise. Available in an extensive range of sizes (XS-5XL) and 12 colours, it offers exceptional value, especially for high volume projects. For a cohesive look, pair it with the B&C ID.000 Sweatpant.

Features

True gender-neutral style with side seams

Classic modern relaxed fit for all occasions

Excellent printability and handfeel

Expertly designed single jersey lined hood for a perfect fit

Set-in sleeves with a slight dropped shoulder enhance mobility

Kangaroo pocket thoughtfully crafted for comfortable hand placement and secure storage

Classic cuffs and bottom hem in 1×1 rib with elastane.

9 sizes: XS-5XL

12 classic and vibrant colours to cover any need: from promotional and workwear, to academic and activewear

"B&C No Label" solution for easy rebranding

Sustainability

B&C, now sourcing 100% more sustainable fibres

Supporting responsible cotton production through Better Cotton*

Contains recycled materials

Each B&C ID.223 Hoodie contains on average 28 post-consumer recycled PET bottles (550ml)

* This product is sourced via a system of mass balance and therefore may not contain Better Cotton.

Mix&Match

Pair it with the B&C ID.000 Sweatpant for a full look

Sustainability



Care instructions



All our products are tested and approved using all main print techniques.

View on the website



Colors

002
BLACK

003
NAVY

620
SPORT GREY

001
WHITE

450
ROYAL BLUE

670
DARK GREY

004
RED

882
FOREST GREEN

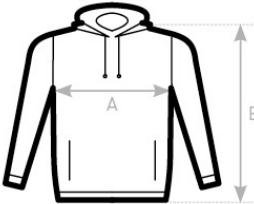
431
LAKE BLUE

235
ORANGE

370
BURGUNDY

313
ACID LIME

Size Guide



B&C ID.223 HOODIE WG008	XS	S	M	L	XL	2XL	3XL	4XL	5XL
	A	A	A	A	A	A	A	A	A
	B	B	B	B	B	B	B	B	B

