



WK001

## B&C ID.332 Crew /kids

B&C  
COLLECTION

### Composition

80% pre-shrunk ring-spun cotton, (Investing in Better Cotton\*) / 20% recycled polyester - RCS certified

\* By choosing our cotton products, you're supporting our investment in Better Cotton's mission

### Size

3-4, 5-6, 7-8, 9-11, 12-13

### Packing

5 pcs/pack & 40 pcs/carton

### Weight

280 g/m<sup>2</sup>

### Details

Meet the unmatched sustainable modern classic for kids. This gender-neutral crew neck sweatshirt, for boys & girls from kid to teen, with a comfortable dropped shoulder for ease of movement, will withstand any wear and tear! Made from soft, durable 100% cotton face fabric for excellent printability and neck label free for easy customisation. Pair it with the B&C.ID.000 Sweatpant /kids for a complete, comfortable look; and combine it with adult B&C ID.332 Crew for coordinated looks.

### Features

Engineered for boys & girls (gender-neutral), from kid to teen

Side seamed

Classic modern relaxed fit for all occasions

100% cotton face with excellent printability and soft handfeel

Set-in sleeves with slight dropped shoulder enhance mobility

Classic cuffs and bottom hem in 1×1 rib with elastane

5 sizes: 3/4 to 12/13yrs

Wide range of 10 classic and contemporary colours to cover any need: from promotional to schools, teams and activewear

"B&C No Label" solution for easy rebranding

### Sustainability

B&C, now sourcing 100% more sustainable fibres

Supporting responsible cotton production through Better Cotton\*

Contains certified recycled materials

Each B&C ID. 332 Crew /kids contains on average 7 post-consumer recycled PET bottles (550ml)

\* This product is sourced via a system of mass balance and therefore may not contain Better Cotton.

### Mix&Match

Pair it with the B&C ID.000 Sweatpant /kids for a full look

Matching adult style, from 15 yrs+: B&C ID.332 Crew

### Sustainability



### Care instructions



All our products are tested and approved using all main print techniques.

View on the website



Colors



003  
NAVY



002  
BLACK



620  
SPORT GREY



001  
WHITE



004  
RED



450  
ROYAL BLUE



540  
BOTTLE GREEN



565  
LOTUS BLUE

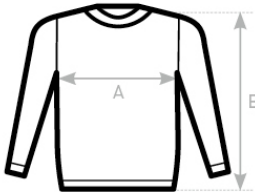


240  
POP YELLOW



351  
RADIANT PURPLE

Size Guide



B&C ID.332 CREW /KIDS WK001	1/2	3/4	5/6	7/8	9/11	12/13
	80-92	98-104	110-116	122-128	134-146	152-164
A HALF CHEST	-	34	37	40	43,5	47
B BODY LENGTH FROM NECK POINT	-	47	50	53	56,5	60

View on the website

